

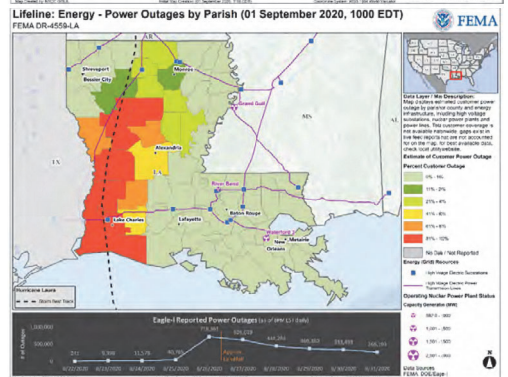
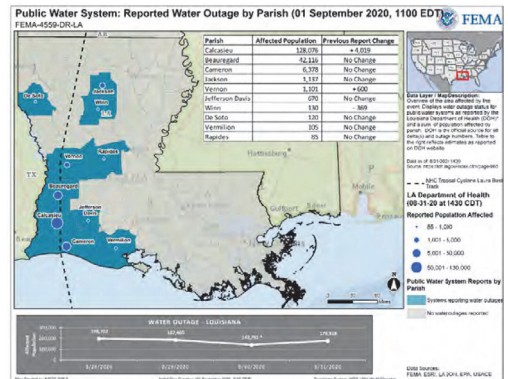


Tropical Cyclone Laura September 1, 2020



Current Situation: Efforts to stabilize community lifelines continue. Restoration of power and water/wastewater infrastructure are underway & remain critical priorities, along with ensuring survivor sheltering, support to healthcare facilities, and debris removal. Resources continue to move into impacted states to supply points of distribution (PODs) and efforts are underway to secure lodging solutions for emergency responders and restoration crews. The Federal Government is postured to support state requirements as response operations continue in the region

LIFELINES SUMMARY	
SAFETY & SECURITY	<p>Many evacuation orders have been lifted; new voluntary evacuation order for Beauregard Parish; curfews are in place; federal US&R task forces have demobilized; no security shortfalls reported</p> <p>• 15 (+1) CAP missions completed (DoD Update, 9/1/20, 9:18 a.m. ET)</p> <p>• Community Safety: Evacuation orders/recommendations remain in effect for Beauregard (Voluntary due to water/wastewater outage), Calcasieu, Cameron, Allen, Jefferson Davis, Evangeline, St. Mary, Vermillion & Tangipahoa parishes</p> <p>• SAR: All federal US&R task forces have demobilized; 27,874 (+8,168) damaged of 38,068 (+11,415) structural evaluations (ESF-9 Update, 9/1/20, 7:49 a.m. ET)</p> <p>• Curfews remain in place until further notice for Jasper, Newton & Tyler Counties (FEMA Region VI Update, 8/31/20, 7:32 p.m. ET)</p>
	<p>Condition remains yellow for LA due to disruption to water/wastewater services, assessments and generator installation ongoing. No shortfalls in federal delivery of water & meals; Evacuees in congregate shelters are being moved to non-congregate options to mitigate COVID risks</p> <p>• Water: Stocks continue to be prepositioned in anticipation of water requirements, no unmet needs reported (ESF-7 Update, 8/31/20, 4:44 p.m. ET)</p> <p>• Food/Water: 24 of up to 40 PODs open; 8 additional hub spots, 2 scheduled to open; NGOs continue to support feeding operations (Region VI Update, 8/31/20, 7:46 p.m. ET)</p> <p>• Water: 72 (-2) Public Water System Outages (179,982 (+3,686) customers affected); 153 (+3) Public Water Systems under Boil Water Advisory affecting 418,995 (-3961); 18 (+1) systems reported power loss (LADH, 09/01/20:30 a.m. ET)</p> <p>• Wastewater: Of the 86 systems in the impacted area, 43 are operating, 11 are partly operating, 6 are not operating and 26 are unknown (ESF-3/EPA Update, 8/31/20, 6:31 p.m. ET)</p> <p>• Shelter: 120 responder lodging capsules delivered, 180 in route to McNeese State University ETA 9/1, wrap around services award ETA 9/1; 1,500 bed Responder Support Camp ETA 9/3; American Red Cross supporting identification of congregate sheltering locations for use by responders or private industry (ESF-7 Update, 9/1/20, 10:36 a.m. ET)</p> <p>• Roofing team conducting surveys of potential staging areas & storage facilities; Blue Roof website & phone active for requests from the affected public (Region VI Update, 9/1/20, 12:52 a.m. ET)</p> <p>• Congregate Shelters: 6 (-1) open with population of 460 (+192)</p> <p>• Non-Congregate Shelters: 5,394 (+724) rooms with population of 10,618 (+640); +2,251 LA citizens in TX Non-Congregate Shelters (Region VI Update, 9/01/20, 8:12 a.m. ET)</p> <p>• Portable Toilets: Region VI providing portable toilets at 4 sites: CP Beauregard (1); Chenault (2); Lake Charles (1) (Region VI Update, 8/30/20, 4:15 p.m. ET)</p>
	<p>• Food/Water: 19 federally supported PODs operational (Region VI, 8/31/20, 2:33 p.m. ET)</p> <p>• Wastewater: Of the 58 wastewater systems, 36 operational, 21 partially operational, 4 not operational, & 61 unknown (ESF-3/EPA Update, 8/31/20, 6:31 p.m. ET)</p> <p>• Water: Of 165 public water systems in the impacted area, 51 operating with use restrictions & 39 not operational; 13 facilities on Boil Water Notice; 30 of 84 normal functioning facilities on generator affecting 127,806 customers (ESF-3/EPA Update, 8/31/20, 6:31 p.m. ET)</p> <p>• Congregate Shelters: 1 (+1) open with population of 88 (+88) (Region VI Update, 9/01/20, 8:12 a.m. ET)</p> <p>• Non-Congregate Shelters: ~3,000 rooms in 42 locations with population of 9,782 (-1,929)</p>
FOOD, WATER, SHELTER	<p>Yellow due to COVID-19 response. 15 fatalities confirmed in LA; 10 post-storm injury/fatality risk increasing due to use of heavy equipment & generators. Emergency support meeting impacts to medical system. No additional unmet needs for federal support reported</p> <p>• Fatalities: 15 confirmed (4 from falling trees, 1 drowned, 10 from carbon monoxide poisoning) (LA Dept of Health, 8/31/20, 10:14 p.m. ET)</p> <p>• 15 hospitals evacuated, 14 hospitals on generator power; 11 nursing homes evacuated, 19 on generator power (HHS ASPR, 8/31/20, 6:00 p.m. ET)</p> <p>• 8 (+3) Community Based Testing Sites resumed operations (5 in New Orleans, 2 in Baton Rouge, 1 in Lake Charles); testing for evacuees completed at 7 non-congregate shelter sites; 4 additional shelter sites planned for testing on 9/2 (HHS ASPR Update, 9/1/20, 8:53 a.m. ET)</p> <p>• Federal support ongoing for ground ambulances & paratransit vehicles across LA; rotary wing & fixed wing operational & 1 neonatal air ambulance if needed; supporting Alexandria mega-shelter, VA hospital, & hospital evacuations from impacted areas (AMR/FEMA DOSR #3, 8/31/20, 2:42 p.m. ET)</p>
	<p>• Food/Water: 19 federally supported PODs operational (Region VI, 8/31/20, 2:33 p.m. ET)</p> <p>• Wastewater: Of the 58 wastewater systems, 36 operational, 21 partially operational, 4 not operational, & 61 unknown (ESF-3/EPA Update, 8/31/20, 6:31 p.m. ET)</p> <p>• Water: Of 165 public water systems in the impacted area, 51 operating with use restrictions & 39 not operational; 13 facilities on Boil Water Notice; 30 of 84 normal functioning facilities on generator affecting 127,806 customers (ESF-3/EPA Update, 8/31/20, 6:31 p.m. ET)</p> <p>• Congregate Shelters: 1 (+1) open with population of 88 (+88) (Region VI Update, 9/01/20, 8:12 a.m. ET)</p> <p>• Non-Congregate Shelters: ~3,000 rooms in 42 locations with population of 9,782 (-1,929)</p>
	<p>• Food/Water: 19 federally supported PODs operational (Region VI, 8/31/20, 2:33 p.m. ET)</p> <p>• Wastewater: Of the 58 wastewater systems, 36 operational, 21 partially operational, 4 not operational, & 61 unknown (ESF-3/EPA Update, 8/31/20, 6:31 p.m. ET)</p> <p>• Water: Of 165 public water systems in the impacted area, 51 operating with use restrictions & 39 not operational; 13 facilities on Boil Water Notice; 30 of 84 normal functioning facilities on generator affecting 127,806 customers (ESF-3/EPA Update, 8/31/20, 6:31 p.m. ET)</p> <p>• Congregate Shelters: 1 (+1) open with population of 88 (+88) (Region VI Update, 9/01/20, 8:12 a.m. ET)</p> <p>• Non-Congregate Shelters: ~3,000 rooms in 42 locations with population of 9,782 (-1,929)</p>
HEALTH & MEDICAL	<p>Yellow due to COVID-19 response. 15 fatalities confirmed in LA; 10 post-storm injury/fatality risk increasing due to use of heavy equipment & generators. Emergency support meeting impacts to medical system. No additional unmet needs for federal support reported</p> <p>• Fatalities: 15 confirmed (4 from falling trees, 1 drowned, 10 from carbon monoxide poisoning) (LA Dept of Health, 8/31/20, 10:14 p.m. ET)</p> <p>• 15 hospitals evacuated, 14 hospitals on generator power; 11 nursing homes evacuated, 19 on generator power (HHS ASPR, 8/31/20, 6:00 p.m. ET)</p> <p>• 8 (+3) Community Based Testing Sites resumed operations (5 in New Orleans, 2 in Baton Rouge, 1 in Lake Charles); testing for evacuees completed at 7 non-congregate shelter sites; 4 additional shelter sites planned for testing on 9/2 (HHS ASPR Update, 9/1/20, 8:53 a.m. ET)</p> <p>• Federal support ongoing for ground ambulances & paratransit vehicles across LA; rotary wing & fixed wing operational & 1 neonatal air ambulance if needed; supporting Alexandria mega-shelter, VA hospital, & hospital evacuations from impacted areas (AMR/FEMA DOSR #3, 8/31/20, 2:42 p.m. ET)</p>
	<p>• Fatalities: 15 confirmed (4 from falling trees, 1 drowned, 10 from carbon monoxide poisoning) (LA Dept of Health, 8/31/20, 10:14 p.m. ET)</p> <p>• 15 hospitals evacuated, 14 hospitals on generator power; 11 nursing homes evacuated, 19 on generator power (HHS ASPR, 8/31/20, 6:00 p.m. ET)</p> <p>• 8 (+3) Community Based Testing Sites resumed operations (5 in New Orleans, 2 in Baton Rouge, 1 in Lake Charles); testing for evacuees completed at 7 non-congregate shelter sites; 4 additional shelter sites planned for testing on 9/2 (HHS ASPR Update, 9/1/20, 8:53 a.m. ET)</p> <p>• Federal support ongoing for ground ambulances & paratransit vehicles across LA; rotary wing & fixed wing operational & 1 neonatal air ambulance if needed; supporting Alexandria mega-shelter, VA hospital, & hospital evacuations from impacted areas (AMR/FEMA DOSR #3, 8/31/20, 2:42 p.m. ET)</p>
	<p>• Fatalities: 15 confirmed (4 from falling trees, 1 drowned, 10 from carbon monoxide poisoning) (LA Dept of Health, 8/31/20, 10:14 p.m. ET)</p> <p>• 15 hospitals evacuated, 14 hospitals on generator power; 11 nursing homes evacuated, 19 on generator power (HHS ASPR, 8/31/20, 6:00 p.m. ET)</p> <p>• 8 (+3) Community Based Testing Sites resumed operations (5 in New Orleans, 2 in Baton Rouge, 1 in Lake Charles); testing for evacuees completed at 7 non-congregate shelter sites; 4 additional shelter sites planned for testing on 9/2 (HHS ASPR Update, 9/1/20, 8:53 a.m. ET)</p> <p>• Federal support ongoing for ground ambulances & paratransit vehicles across TX (ESF 8, 8/31/20, 2:42 p.m. ET)</p>



Regions	Activations
HQ	<p>• NRCC: Day: Level 1; Night: Level 1</p>
Regions	<p>• Region IV: RRCC: Rostered RWC: Monitoring</p> <p>• Region VI: RRCC: Level II RWC: Monitoring; Dallas PMC Open, can process 250 responders/day</p> <p>• Deployed FEMA Personnel for TC Laura: TX: 163 LA: 413 AR: 15 (DTS report; 9/1/20, 8:00 a.m. ET)</p>
LA	<p>• Declaration: FEMA-2528-EM-LA (Category B) / FEMA-DR-4559-LA (9 (+3), Acadia, Ouachita, Vermillion) parishes IA, PA-Category A; Category B state-wide) Total Valid IA Registrations: 67,182 (+2,891) (IA Disaster Summary 9/1/20, 10:11 a.m. ET) FCOs: John Long, Cole Bricker FCO (Recovery) IMATs: White deployed select staff to Lake Charles and Baton Rouge, Red deployed to Baton Rouge, Red-IMAT deployed to Lake Charles, RV-IMAT-2 deployed to Baton Rouge State EOC: Partial Activation (FEMA Daily Ops Briefing, 9/1/20, 8:30 a.m. ET)</p>
TX	<p>• Declaration: FEMA-3540-EM-TX (Category B); FCOs: Jerry S. Thomas; Kevin Hannes (IMAT White) deployed to Houston IMAT: RV-IMAT-1 deployed to TX State EOC: Partial Activation</p>
MS	<p>• Declaration: FEMA-3539-EM-MS (Category B) FCO: Brett H. Howard State EOC: Partial Activation</p>
AR	<p>• Declaration: FEMA-3541-EM-AR (Category) & Direct Federal Assistance FCO: Roland Jackson (anticipate demobilizing 9/2) IMAT: RV-IMAT deployed to Little Rock (anticipate demobilizing 9/2)</p>

LIFELINES SUMMARY	
ENERGY	<p>LA condition remains yellow; power outage is limiting factor with impacts to water, fuel, & health/ medical; assessments & temporary power mission ongoing; full restoration could take weeks in several areas</p> <p>• Full restoration south of I-10 continues to be several weeks due to major damage to key transmission lines at coastal TX-LA border; assessments being conducted by companies in coordination with state & federal assets; mutual assistance networks activated supporting restoration (ESF-12 Update, 9/1/20, 10:00 a.m. ET)</p> <p>• Oil/Gas: 4 refineries are shut down totaling 0.9 million b/d (9% of total Gulf Coast capacity); 54% of the oil and 41% of the natural gas production in the federally administered areas of the Gulf of Mexico remain shut-in; no anticipated supply issues (ESF-12 Update, 9/1/20, 10:00 a.m. ET)</p> <p>• Power: 257,437 (-12,563) customers, 12% (-6%) statewide without power; 58% (+6%) of power restored from peak outage; most significant damage: Cameron (99%), Calcasieu (98%), Allen (98%), Beauregard (91%), Jefferson Davis (90%), Grant (43%), & Rapides (14%) parishes; preliminary assessments; 8,100+ poles, 3,300 transformers, 440 mi. of wire, 64 distribution circuits damaged; Entergy, Beauregard Electric, Cleco, & Jeff Davis Electric report full restoration ETA several weeks (ESF-12 Update, 9/1/20, 10:00 a.m. ET)</p> <p>• 143 generators available; 27 (-1) on-hand at FSA Camp Beauregard, 57 (+1) assigned to USACE, 59 remaining at Craig Field (ESF-7 Update, 9/1/20, 10:04 a.m. ET)</p> <p>• USACE conducting temporary emergency power assessments at 59 (+9) locations, including 35 (+3) water/wastewater facilities; 15 (+3) south of I-10, remainder north of I-10; 13 (+2) pre-installation inspections in progress at water & waste water facilities, 3 (+1) pending at other facilities; 8 (+5) installations completed (5 at water/wastewater facilities) (ESF-3 Update, 9/1/20, 9:53 a.m. ET)</p> <p>• Oil/Gas: Reported wind damage at Citgo-Lake Charles refinery; ETA 4-6 weeks to repair; Phillips 66-Westlake conducting damage assessments; Delek-Krotz Springs and Calcasieu Refining-Lake Charles already shut down pre-hurricane and remain idle (ESF-12 Update, 9/1/20, 10:00 a.m. ET)</p> <p>• Fuel: 82% (-1%) of service stations in impacted areas have not reported operation status to Gas Buddy; Of the 18% (+1%) stations that have reported, 70% have fuel and power, and 30% lack fuel, power or both</p>
	<p>• Power: 36,370 (-3,630) customers without power; 88% (+7%) restored from peak; Jefferson & Orange Counties continue to have the most outages; 1,021 poles, 543 transformers, and over 371,000 ft of wire damaged; at least 170 transmission lines & 205 substations have sustained damage; Entergy reports restoration ETA of 1-3 days for Beaumont, Port Arthur, Nederland, Port Neches, Groves, and Orange; full TX restoration contingent on repair of key transmission lines (ESF-12 Update, 9/1/20, 10:00 a.m. ET)</p> <p>• Oil: 3 of 4 Refineries in Beaumont/Port Arthur area restarting operations, which could take more than a week; Total SA (Port Arthur) waiting for external power restoration (ESF-12 Update, 9/1/20, 10:00 a.m. ET)</p>
	<p>• Power: 36,370 (-3,630) customers without power; 88% (+7%) restored from peak; Jefferson & Orange Counties continue to have the most outages; 1,021 poles, 543 transformers, and over 371,000 ft of wire damaged; at least 170 transmission lines & 205 substations have sustained damage; Entergy reports restoration ETA of 1-3 days for Beaumont, Port Arthur, Nederland, Port Neches, Groves, and Orange; full TX restoration contingent on repair of key transmission lines (ESF-12 Update, 9/1/20, 10:00 a.m. ET)</p> <p>• Oil: 3 of 4 Refineries in Beaumont/Port Arthur area restarting operations, which could take more than a week; Total SA (Port Arthur) waiting for external power restoration (ESF-12 Update, 9/1/20, 10:00 a.m. ET)</p>
COMMUNICATIONS	<p>LA condition remains yellow due to localized communication gaps; Deploying assets to address instability; No disruptions to 911 emergency services; all PSAPs online or re-routed; network restoration ongoing; back-up batteries & generators online; restoration contingent on accessibility, stable power, & generator fuel; fiber cuts from debris removal limiting service restoration</p> <p>• DEC MERS resources supporting Region VI, US&R, & federal response (ESF-2 Update, 9/1/2020, 9:42 a.m. ET)</p> <p>• Commercial: State-wide cell service 94.8% operational; 2 parishes continue reporting significant cellular network outages (<50% availability): Cameron (27.6% availability, 8 of 29 sites operational), Calcasieu (45.4% availability, 84 of 185 sites operational); main cause of outage is wireline damage; providers have placed deployable devices but limitations remain (ESF-2 Update, 8/31/20, 11:00 a.m. ET)</p> <p>• Power outages in multiple counties continue to impact customer connectivity in wireline, wireless, & cable services; Private sector providers reengineered wireless networks for optimal coverage & using mobile temporary assets, 200 sites back online; Restoration/repair teams deploying recovery equipment to support customers & first responders; adequate assets on standby (ESF-2, 8/31/2020, 3:18 p.m. ET)</p> <p>• Tactical: 13 of 141 LA Wireless Information Network (LWIN) sites non-operational; 0 Cameron Parish sites operational-degrading first responder radio communications; State deployed mobile tower trailer & satellite fly away kit to stabilize responder communications; anticipate adequate first responder communications; results of restoration will be known by 9/2-9/3 (ESF-2 Update, 8/31/2020, 11:33 p.m. ET)</p> <p>• NG assets supporting responder comms in Cameron, Calcasieu, Winn (NGB Update, 9/1/20, 6:18 a.m. ET)</p>
	<p>• Cell service 97.7% operational in impacted area (Jasper, Newton, Orange) (ESF-2 Update, 8/31/20, 11:00 a.m. ET)</p>
	<p>• Cell service 97.7% operational in impacted area (Jasper, Newton, Orange) (ESF-2 Update, 8/31/20, 11:00 a.m. ET)</p>
HAZMAT TRANSPORTATION	<p>All major & primary roads are clear, significant debris clearance underway; rail operations resumed in most areas; no unmet needs</p> <p>• Roads: LA NG cleared 1,211 (+278) miles in route clearance operations (NGB Update, 9/1/20, 9:18 a.m. ET)</p> <p>• Ports: Open with restrictions: Morgan City, Port Fourchon, & LA Offshore Oil Port; Closed: Lake Charles (ESF-1 Update, 8/31/20, 1:44 p.m. ET)</p> <p>• Ports: Open with Restrictions: Houston, Galveston, Port Arthur, Texas City, Beaumont, & Freeport; (ESF-1 Update, 8/31/20, 1:44 p.m. ET)</p>
	<p>Response to oil-spills ongoing; monitoring continues with no unmet needs or federal assistance required</p> <p>• Continuing to monitor for any additional needs; none anticipated (ESF-10 Update, 9/1/20, 9:56 a.m. ET)</p>
	<p>• Nothing significant to report.</p>